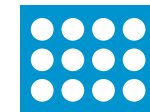
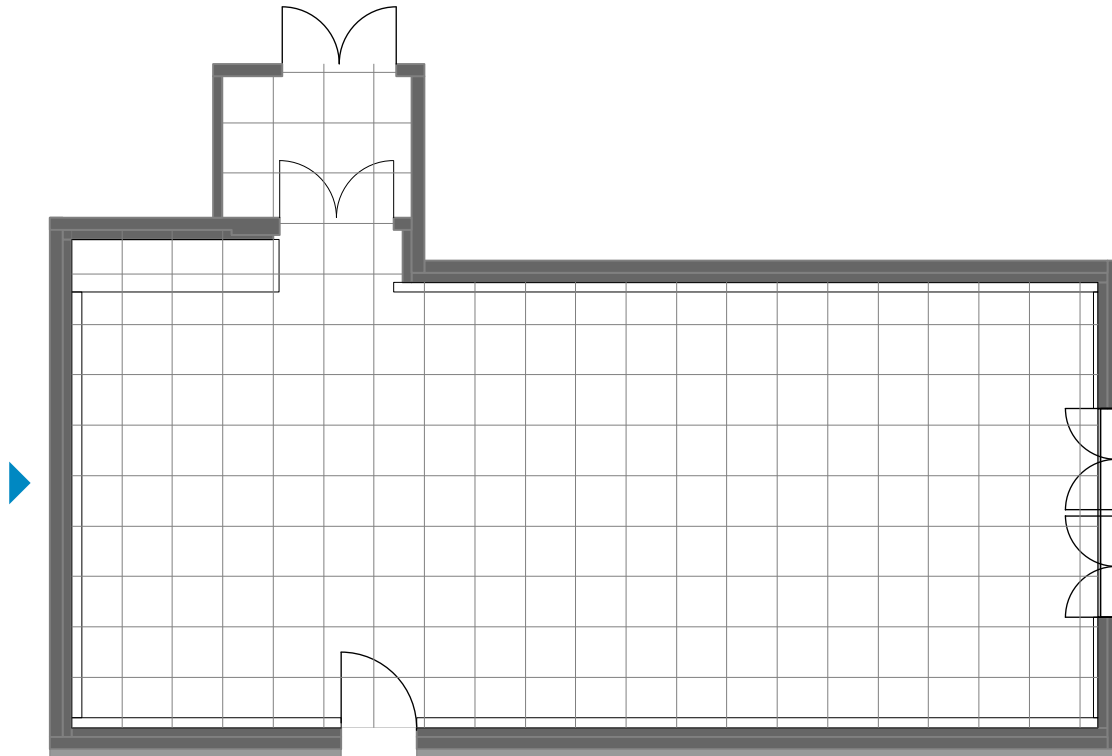
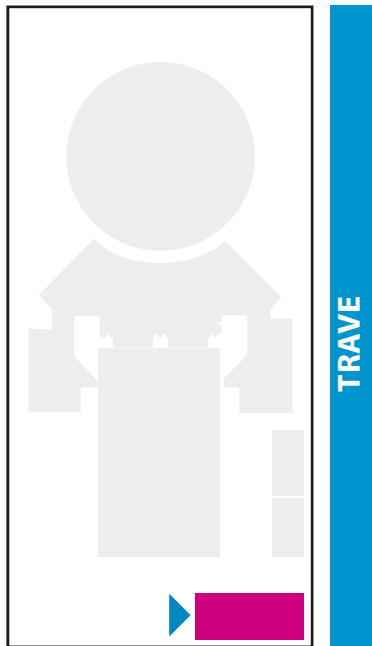
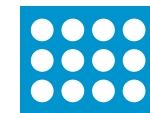


➔ **RAUM.PLAN.MUK.**

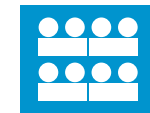
**ORCHESTERSAAL**



Stehplätze  
**344**



Reihenbestuhlung  
**200**



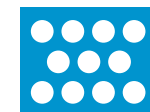
Parlamentarisch  
**114**  
 BASIS Tischmaß 60 x 120 cm  
 andere Maße auf Anfrage



U-Form  
**60**



Bankett  
**120**



Stehempfang  
**150**

Fläche qm/Brutto:  
**172**

Geschoss:  
**EG**

Maßstab:  
**1:150**